

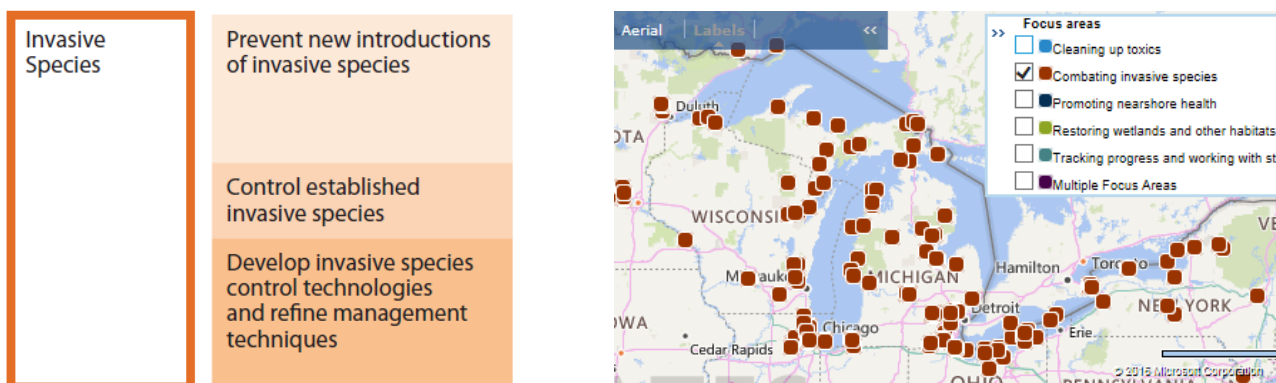
The Great Lakes Restoration Initiative – Invasive Species Focus Area

Introduction

The Great Lakes Restoration Initiative, or the GLRI, was launched in 2010 to accelerate efforts to protect and restore the largest system of fresh surface water in the world, the Great Lakes. The GLRI has been a catalyst for unparalleled federal agency coordination – through the Interagency Task Force (IATF) and the Regional Working Group (RWG), which are led by the EPA. This coordination has produced unprecedented results. GLRI resources have supplemented agency base budgets that have funded over 3,000 projects that improve water quality, protect and restore native habitats and species, prevent and control invasive species, and address other additional Great Lakes environmental problems. The GLRI is critical to addressing the most persistent and challenging environmental problems facing this important ecosystem. See: www.glri.us

Invasive Species Focus Area

The GLRI has funded over 350 projects that 1) prevent introductions of new species, 2) control invasive species, and 3) develop control technologies and refine management techniques.



Prevention

During FY 2016, the GLRI funded 3 early detection monitoring activities that enhance the ability to detect and respond to new invasive species introductions. Federal agencies and their partners also completed a total of 11 exercises and responses. Twenty-one projects were funded that help block the pathways of introduction. These pathways include: Canals and water ways, recreational boating, commercial shipping, illegal trade of banned species, release of aquarium species, and release of live bait.

Control

In FY 2016, federal agencies and their partners managed and funded projects that protected over 10,000 aquatic or terrestrial acres.

Technology

During FY 2016, federal agencies and their partners tested two new ballast water management systems.

Note: EPA is currently offering funding for three categories of work:

- Great Lakes Taxonomy and Barcodes to Support Early Detection Monitoring
- Invasive Species Control
- Foundations for Invasive Species Collaborations

For more details, see: <https://www.epa.gov/great-lakes-funding/great-lakes-restoration-initiative-2016-rfa>